

PLANTA BAJA

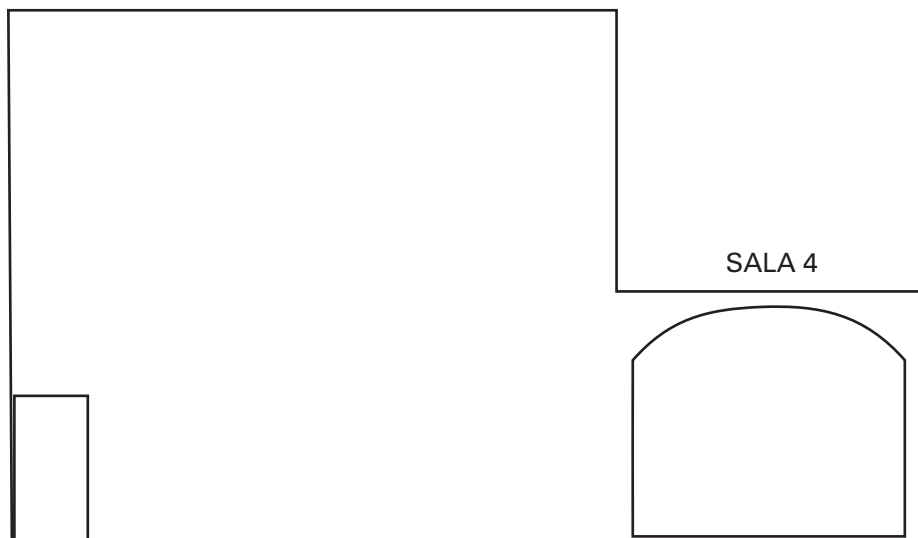
- 1. Recepción
- 3. Sala Exposiciones
- 4. Sala Exposiciones
- 5. Sala Exposiciones
- 6. Sala Exposiciones
- 7. Claustro
- 8. Almacén

Salas exposiciones: instalado falso suelo registrable de madera.
Tomas de luz en suelo y paredes de las salas.

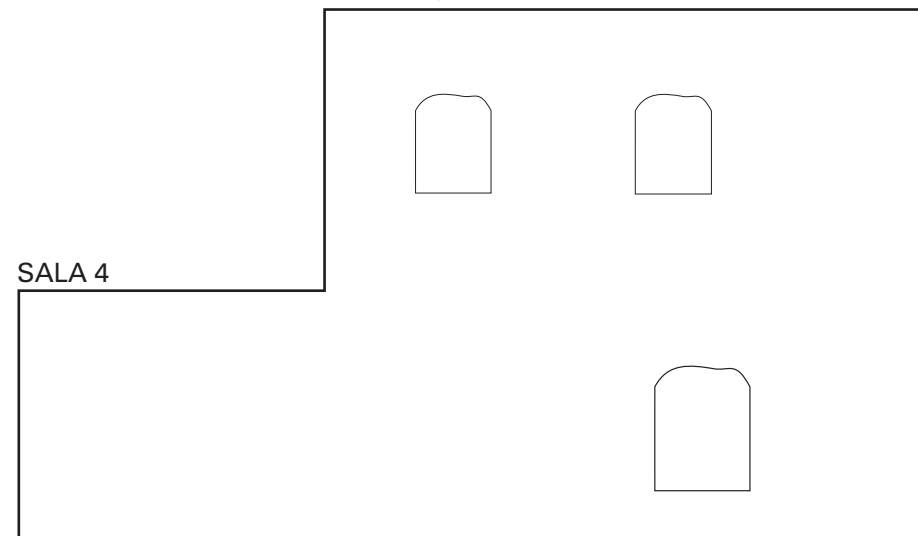
 fancoils



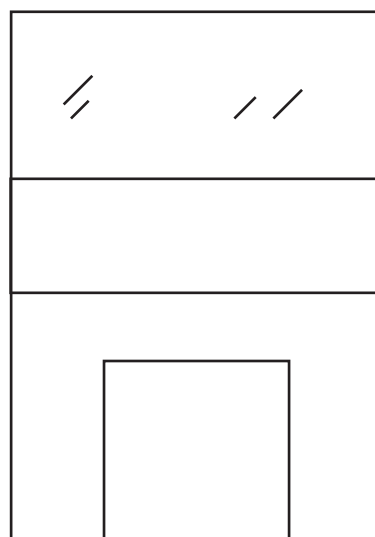
SALA 5 pared C



SALA 5 pared A



SALA 5 pared D



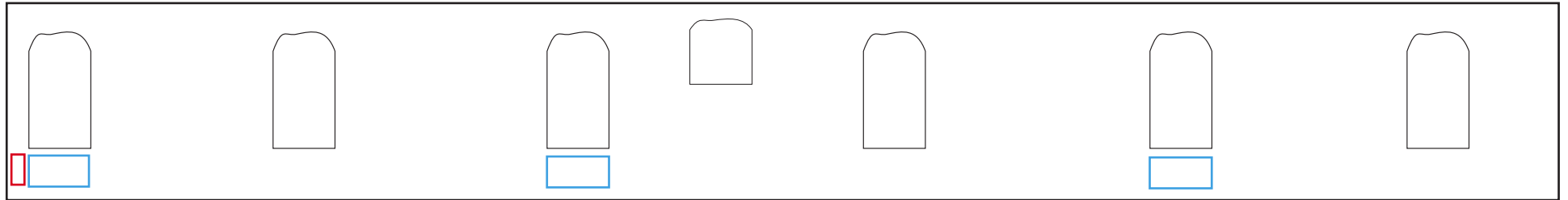
SALA 4 pared B



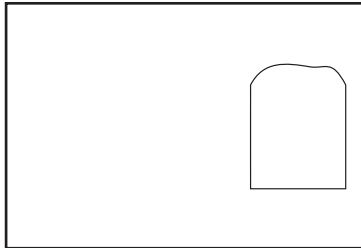
SALA 3
pared A



SALA 3
pared C



SALA 3
pared B



 fancoils

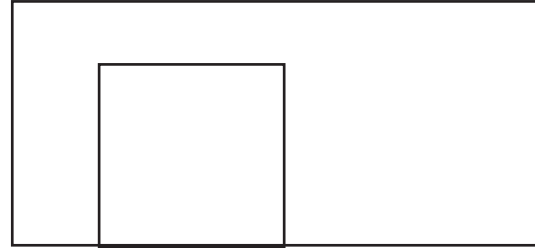
 extintor con caja

SALA 6

pared A




pared B



pared C



 fancoils

 extintor con caja